



Ridgeway House
Ridgeway
Sheffield
S12 3XR
£1,250,000

Saxton Mee



Ridgeway House, 90 Main Road, Ridgeway, Sheffield

Ridgeway House is a beautifully presented Georgian House built in 1792.

Situated in the very sought after village of Ridgeway, this stunning Grade II Listed Georgian residence is a true gem. Having been meticulously restored by the current owners, the property beautifully marries original character features such as period fireplaces, sash windows and shutters, with stylish modern appointments creating a warm and inviting atmosphere throughout.

This exceptional detached home boasts an impressive layout, offering 4 spacious reception rooms along with an orangery, all of which provide ample space for both relaxing and entertaining.

The five well proportioned and extremely well presented bedrooms give plenty of space for family and guests alike. Two of the bedrooms have equally impressive en-suites along with a luxurious family bathroom. The 5th bedroom is an exceptionally large room which lends itself to a variety of uses.

The character of the home is further enhanced by the flow of accommodation, spread over three floors, providing a harmonious living experience.

Outside, the property features a gated stone flagged drive with ample parking for several vehicles, along with a detached stone-built double garage/workshop.

Perfectly complimenting the accommodation, the beautiful gardens are undoubtedly a stand out feature in their own right. The front garden having wrought iron railings with a central stone flagged path flanked by two Carrera marble lions, believed to have come from the Great Exhibition of London in 1851. The rear garden features an ornamental pond, a large lawned area and various fruit trees.

Adding to the allure of this residence is a separate detached coach house which offers first floor studio accommodation. This versatile space could serve as a home office, quest room or creative studio, catering to a variety of needs.



Entrance Hall

Having an impressive wooden door with heavy brass furniture and knocker

Front Sitting Room

Step into this warm and inviting sitting room with a handsome cut stone fireplace with multi fuel fire and period built in desk which is believed to be where Ezra Hutton (the original owner) sat to pay out the wages to the staff of the nearby Scythe and Sickle works hamlet that he owned. Sash windows looking onto the front garden

Formal Dining Room

A very impressive dining room, again with a stone fire surround and period Georgian grate, sash windows to both the front and side with this room opening immediately through to the

Music Room

Housing a grand piano, with twin French doors to the orangery and a door opening to the second (servants) staircase which rises to both the first and second floors.

Downstairs Cloakroom/WC

With vanity basin and WC, tiled floor, useful coat/storage cupboard and window to the rear.

Family Room/Snug

A large family room with stone flooring and window to the side. Large free standing cupboards to one wall. There is a breakfast bar which opens immediately through to the:

Kitchen/Breakfast Room

Superb kitchen with impressive original feature stove to one wall which incorporates a 'spit roast', plus a range cooker, Pippy Oak bespoke kitchen units, housing 2 integral fridges and an integral freezer with contrasting work surfaces and a ceramic sink, travertine tiled floor and door to the:

Orangery

Beautiful light room which overlooks the garden

Cellar

Large cellar accessed from the inner hall which has power and lights and provides ample dry storage.

First Floor Landing

With feature gallery and window to the front having doors to the two main front bedrooms, large walk in cupboard which was believed to be the 'coffin store' in times gone by! Access from the servants staircase to this level from the staircase to the rear

The Yellow Room

Superbly appointed and having the benefit of a stunning en-suite shower room, this double bedroom overlooks the front and has built in storage and original feature fireplace. The en- suite has a walk in shower, low level WC and wash hand basin.

The Pink Room

Excellent double bedroom again to the front elevation, with sash windows to the front and side and original feature fireplace.

The Blue Room

Good size single bedroom to the rear of the property overlooking the side and having an original feature fireplace.

Family Bathroom

Good sized bathroom with bath, WC and hand basin set in a beautiful vanity unit, along with travertine tiles throughout

Second Floor Landing

Provides access to the servants staircase to the rear

Master Bedroom

Superbly appointed master bedroom with traditional fitted corner cupboard and fantastic en-suite bathroom which leads through to a walk-in-wardrobe

Large Double Bedroom/Sitting Room/Teenagers Suite

This room extends from the front to the back of the house and was probably two bedrooms originally but now one very large versatile room - it has been used as a snooker room with a full sized snooker table previously but would make a fantastic top floor suite or could also be used as a large bedroom as it does have access from the landing into the en-suite bathroom to the master bedroom:

Outside

To the front of the property are lawned gardens and tall trees giving the house a real sense of presence with its Carrera marble Lion statues (history states that in 1751 the property was known as 'The Lion House' locally). A large York stone gated driveway with parking for several vehicles

Gated access to the rear garden and the benefit of a:

Detached Double Garage

Detached Double Stone built Garage with personal door to the side. Great for use for vehicles, workshop or storage, having power, water and light.

Rear Garden

The rear garden at Ridgeway House is remarkable. There are stone flagged paths, lawns, pergola and patio seating, mature established shrubs and trees and a large ornamental pond. There is a stone and brick built storage shed near the rear of the property and further up the garden a beautiful double story stone building which shows signs of having been a chicken house to the ground floor with a beautifully presented gardeners room above with original fireplace. This room could be used as an additional bedroom, summer room, home office if so required.

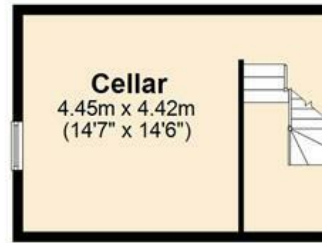
Note from the valuer

On visiting Ridgeway House you will see it is like reading a book as you walk around. There is so much history and love that has gone into this property and it has a feel of being a warm and inviting happy home where you could reside and feel true content. From the sash windows and fireplaces and desk to the coffin cupboard, there is so much to learn about this property you need to visit to let it open its shutters to you. The glorious Moss Valley provides fabulous walks amongst the bluebell and wild garlic woods, with Robins Brook running through. Ridgeway Village also boasts a sports club, tennis courts and Michelin Star restaurant and of course being only a short distance of Sheffield and its excellent transport links.





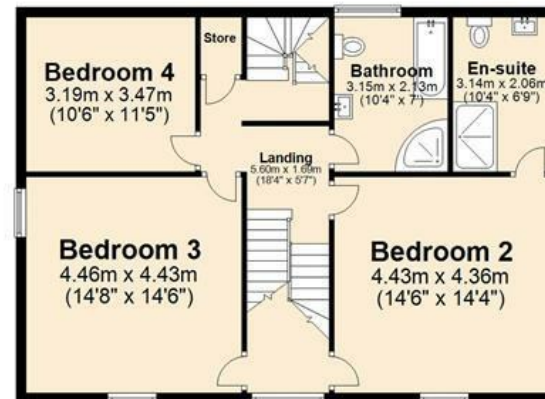
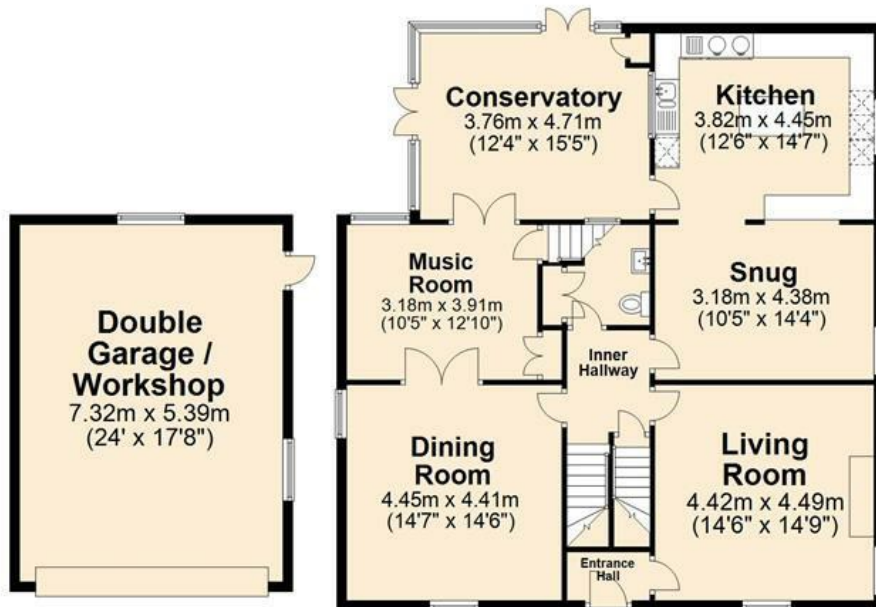
Basement
Approx 27.8 sq metres (298.7 sq. feet)



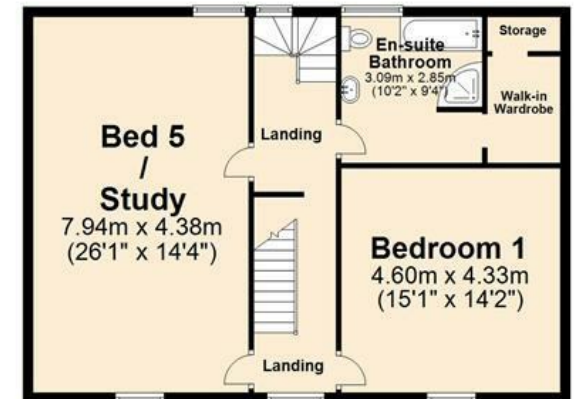
Ground Floor
Approx 179.7 sq metres (1933.8 sq. feet)



First Floor
Approx 96.5 sq metres (1038.4 sq. feet)



Second Floor
Approx 83.5 sq metres (899.1 sq. feet)



Total area: approx. 387.4 sq. metres (4170.1 sq. feet)